



**BOOM MASTER**

Concrete Distributor brochure

# Concrete Distributor.

## **RC TECH**

T: +82)42-936-5963

F: +82)42-936-5962

## **ADDRESS**

53-7, Techno 8-ro, Yuseong-gu, Daejeon,  
Republic of Korea, 34028

## **CONTACT US**

M: rc\_tech@naver.com

W: irctech.kr

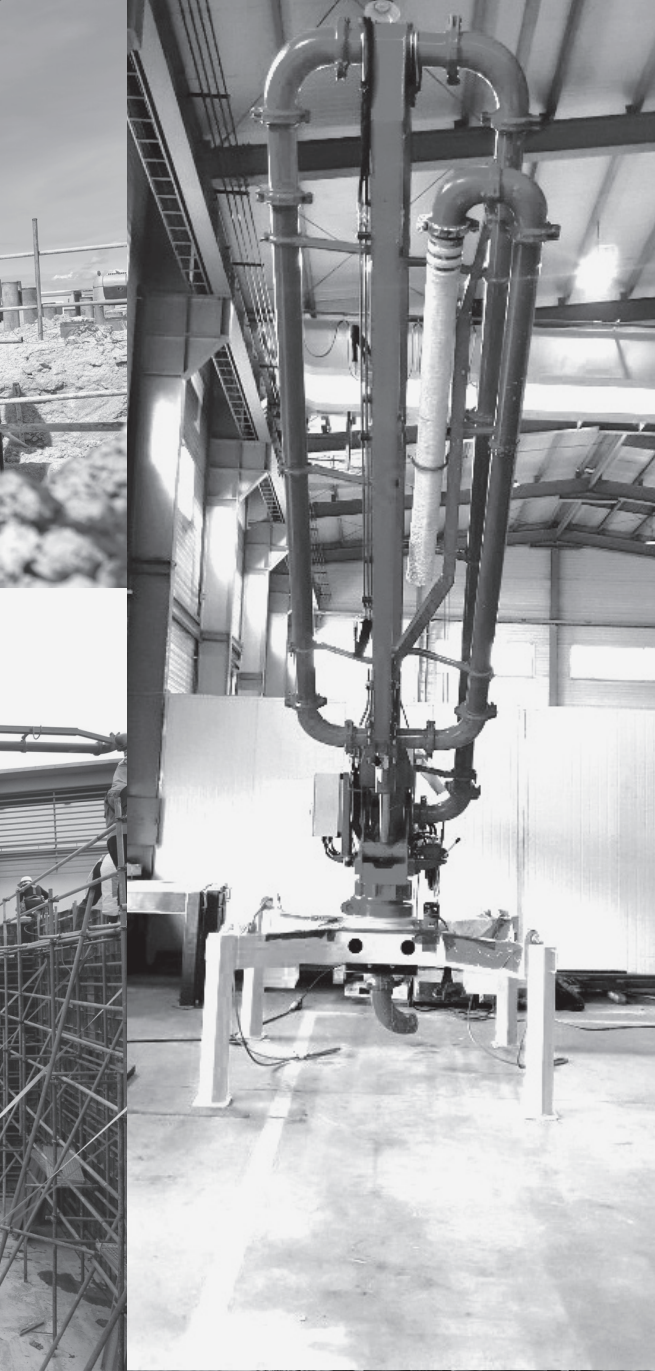
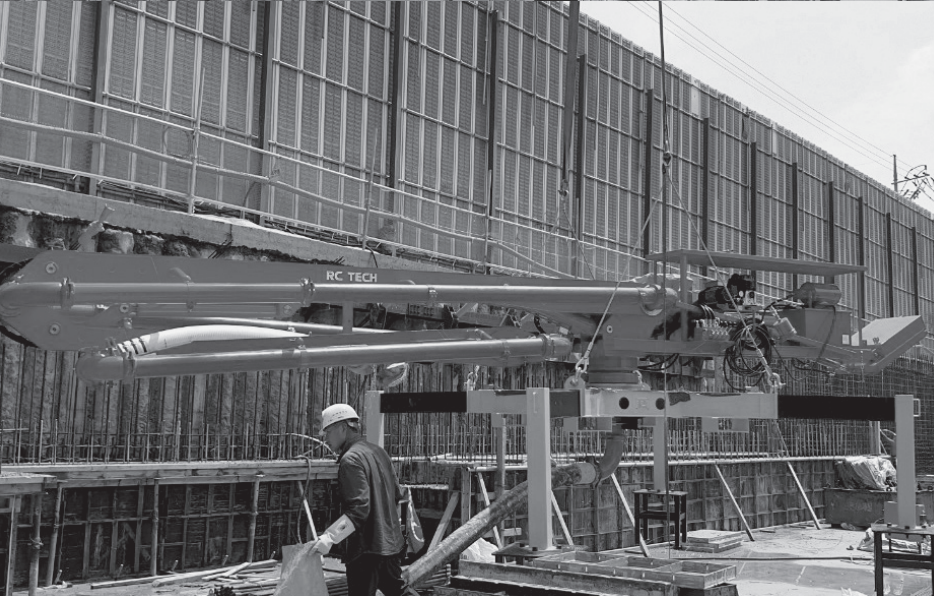


# **BOOM** MASTER

Concrete Distributor brochure







# Contents.

+ Company	04	Company and Brand Introduction
+ Company	06	RCTech History
+ Company	08	Patents and Certifications
+ Introduction	10	Introduction to Boommaster 3-stage Distributor
+ Introduction	12	Main Components
+ Product	14	3-stage Distributor Roll Type
+ Product	16	3-stage Distributor Roll Type Specifications
+ Product	18	3-stage Distributor Z-Type
+ Product	20	3-stage Distributor Z-Type Specifications
+ Product	22	Transfer Car and Its Specifications



# We improve something to.

## Target and Mission

RCTech provides products with excellent performance through systematic technology R&D aiming at heavy equipment safety and efficiency.

04



## about company

Based on the experience of more than 20 years in construction sites and solid technical expertise in the wireless control system, RCTech produces 'Boommaster' concrete distributors in a one-stop system from R&D to production. Moreover, RCTech develops and supplies wireless remote controls for heavy equipment such as 3-stage distributors, Transfer cars, aerial lift trucks, pump cars, cranes, and ladder lift trucks. Our wireless control technology considers reliability and safety first, which are crucial for heavy equipment. We will do our best to provide the best equipment and technologies required by the customers.

05

## about Boommaster

'Boommaster' is a brand specialized in concrete distributors with all of the safety, convenience and precision, which are required at construction sites.

Developing models specialized for concrete placement, we are committed to positioning our brand as a company that considers customers' situations and positions by realizing a site environment that ensures easy, quick, and safe work.



# RCTECH *history.*

- 2012. 04** Incorporated RCTech Co., Ltd. and registered the company factory, and inaugurated CEO Hyun-Mi Jeong.
- 2012. 05** Registered a patent for overwinding prevention device for crane (Patent No. 10-0953796).
- 2012. 11** Received a CE mark for wireless transmitter/receiver (RC-SKY7).
- 2013. 09** Certified as a clean workplace.
- 2015. 02** Certified as a company with dedicated R&D department.
- 2015. 12** Received a CE mark for wireless module (RC-A3070PLL).

- 2016. 03** Registered a patent for horizontality display apparatus for aerial lift truck (Patent No. 10-1604188).
- 2017. 06** Conducted capital increase.
- 2017. 07** Certified as a venture business.
- 2017. 09** Acquired and relocated place of business and factory.
- 2018. 03** Joined Korea International Trade Association.
- 2019. 11** Joined Korea Construction Equipment Manufacturers Association.
- 2020. 09** Registered a patent for the structure of wire-driven sliding carrier for ladder truck(Patent No. 10-2020-0076344).





# Patents & Certificates.

## Patents

- 01. Horizontality Display Apparatus for Aerial Lift Truck (Patent No. 10-1604188)
- 02. Overwinding Prevention Device for Crane (Patent No. 10-0953796)
- 03. Structure of Wire-driven Sliding Carrier for Ladder Truck (Patent No. 10-2020-0076344)

## Certificates

- 01. Conformity Certificate for Wireless Equipment, Broadcasting Communication Equipment, Etc. (GK1)
- 02. Conformity Certificate for Wireless Equipment, Broadcasting Communication Equipment, Etc. (RC-TX-001)
- 03. Conformity Certificate for Wireless Equipment, Broadcasting Communication Equipment, Etc. (RC-TX-002)
- 04. Conformity Certificate for Wireless Equipment, Broadcasting Communication Equipment, Etc. (SMA-TX)
- 05. Conformity Certificate for Wireless Equipment, Broadcasting Communication Equipment, Etc. (RC2P-TX)
- 06. Conformity Certificate (RC-TX-003)
- 07. Received a CE mark for wireless transmitter/receiver (RC-SKY7).
- 08. Received a CE mark for wireless module (RC-A3070PLL).
- 09. Conformity Certificate for Wireless Equipment, Broadcasting Communication Equipment, Etc. (RC2P-RX)
- 10. Conformity Certificate for Wireless Equipment, Broadcasting Communication Equipment, Etc. (PLL3070A)







## + Introduction

**BOOM MASTER**

# 3-Stage Concrete Distributor.

## Features of Boommaster 3-stage Distributor

Having developed the 3-stage distributor in 2018 and launched it in Korea, we have exported it to Japan, Thailand, and other countries and received very positive feedback from constructors.

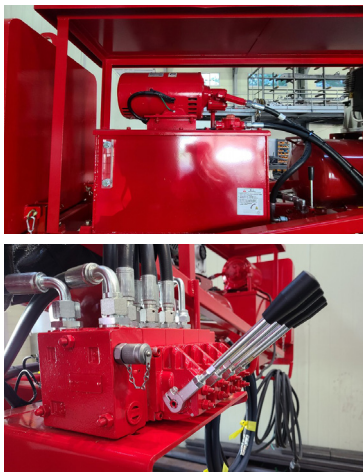
We differentiated it by improving the drawbacks of conventional concrete distributors, enhancing safety and precision and making it easy to use. With a counterweight and a wireless remote control, it is possible to pour the concrete precisely.

## Suitable Sites for Boommaster 3-stage Distributor

- Rooftops, slabs, parking lots, retaining walls, pillars, roofs, bridges, and railings
- Confined places that a concrete pump truck is unable or difficult to access
- Sites with high risk factors in the work environment due to frequent movements



# Main Components.



**Hydraulic Motors and Proportional Valves**

Using a remote control and a digital type of proportional control valve, the Boommaster 3-stage Distributor allows easy control of the boom moving speed and is easy to operate as there is less boom bouncing.



**Wireless Remote Control Transmitter | Receiver**

The Boommaster remote control is capable of delicate operations as it is of a digital, proportional control type, and enables precise concrete pumping job.



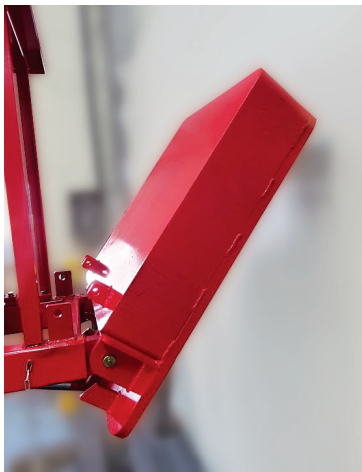
**Transfer Car**

The Boommaster transfer car is a device that safely transports the distributor in a place that a forklift cannot access. With the built-in wired remote control, it is easy for anyone to control it.



**Highly Sophisticated Works**

It is easy to rotate and move the distributor freely, making it easy to pour concrete quickly, even in the sites requiring frequent movements and multiple concrete discharges, such as retaining walls, staircases, parapets, and water-blocking mounds.



**Angular Control of Counterweight**

Modern buildings have complicated structures and require detailed works, making concrete pumping difficult. Our product allows you to control the counterweight angle, enabling the concrete to pour in a narrow space.



**Easy Installation with leg-support**

The leg-support is placed between rebar to prevent them from being damaged.



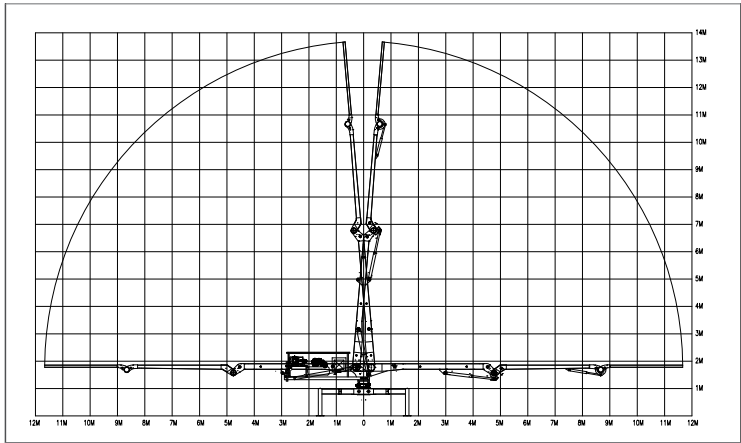
+ Product

**BOOM MASTER**

# Concrete Distributor Roll Type.

## About 3-Stage Distributor Roll Type BMR14

RCTech's Boommaster 3-stage Distributor Roll Type was developed by improving the drawbacks of horizontal distributors. It is operable in a wide range of up to 13.5m horizontally and 14.5m vertically. With a weight of 2.8 tons, it is easy to lift it on a tower crane. It is highly mobile and reduces the working time and cost compared to the concrete pour using a tower crane.





# Product Specifications.

Boommaster 3-Stage Concrete Distributor Roll Type Specification.

Components	Specification Category	For domestic use	For export
3-Stage Concrete Distributor Roll Type	Horizontal Reach	13.5m	13.5m
	Vertical Reach	14.5m	14.5m
	Rotation Angle	360°	360°
	Weight	2,850kg	2,850kg
Electric Panel ① Reverse phase / phase loss prevention device ② Hydraulic motor overload relay	Size	400(W)×500(H)×210(D)	500(W)×500(H)×210(D)
	Input Power	Single-Phase 220V	3-Phase 380V
	Output Power ① Motor	Single-Phase 220V	3-Phase 380V
	Output Power ② Control	Single-Phase AC 220V, DC 24V	Single-Phase AC 220V, DC 24V
Compressor	Input Power	Single-Phase 220V	Single-Phase 220V
	Power Consumption	5.5Hp / 4.2kW	5.5Hp / 4.2kW
	Capacity	75ℓ	75ℓ
	Pressure	8.5bar	8.5bar
Hydraulic Motors and Valves	Input Power	Single-Phase 220V	3-Phase 380V
	Power Consumption	5.5Hp / 3.7kW	7.5Hp / 5.5kW
	Motor Revolutions	1,650 rpm	1,650 rpm
	Valve Control	Proportional Control Type	Proportional Control Type
Options	Main Power Extension Cord	-	-
	Rebar Support	Customizable	Customizable
	Basic Size	500(W)×500(H)×500(D)	500(W)×500(H)×500(D)

Components	Specification Category	For domestic use	For export
Wireless Remote Control Transmitter	Radio System	FSK	FSK
	Frequency Channel	447.8625~447.9875MHz	447.8625~447.9875MHz
	Frequency Output	10mW	10mW
	Transmission / Reception Distance	Within 100m	Within 100m
	Operating Temperature	-25°C~80°C	-25°C~80°C
	Waterproofing	IP 65	IP 65
	Weight	1.5kg(including the battery and suspenders)	1.5kg(including the battery and suspenders)
	Size	100(L)×250(W)×170(H)	100(L)×250(W)×170(H)
	Operating Duration	8 hours or more	8 hours or more
Wireless Remote Control Receiver	Input Power	10~32VDC	10~32VDC
	Power Consumption	150mA(no load)	150mA(no load)
	Proportional Control Channel	6Ch(PVG) or 13Ch(3A)(PWM)	6Ch(PVG) or 13Ch(3A)(PWM)
	Proportional Control Type	Voltage control or current control	Voltage control or current control
	Proportional Control Adjustment	256bit	256bit
	Waterproofing	IP 65	IP 65
	On/Off Output	16Ch(3A) FAT output	16Ch(3A) FAT output
	Size	276(L)×162(W)×85(H)	276(L)×162(W)×85(H)

· Electrical specifications can be customized





+ Product

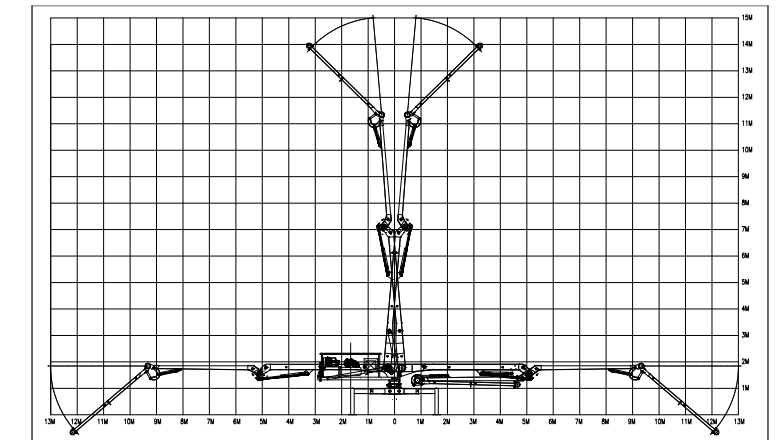
**BOOM MASTER**

# Concrete distributor Z type.

## About 3-Stage Distributor Z Type BMZ15

RCTech's Boommaster 3-stage Distributor Z Type was developed by improving the drawbacks of conventional distributors. It is operable in a wide range of up to 15m horizontally and 16m vertically.

With a weight of 3 tons, it is easy to lift it on a tower crane. It is highly mobile and reduces the working time and cost compared to the concrete pour using a tower crane.





# Product Specifications.

Boommaster 3-Stage Distributor Z Type Specifications.

Components	Specification Category	For domestic use	For export
3-Stage Concrete Distributor Z Type	Horizontal Reach	15m	15m
	Vertical Reach	16m	16m
	Rotation Angle	360°	360°
	Weight	3,100kg	3,100kg
Electric Panel ① Reverse phase / phase loss prevention device ② Hydraulic motor overload relay	Size	400(W)×500(H)×210(D)	500(W)×500(H)×210(D)
	Input Power	Single-Phase 220V	3-Phase 380V
	Output Power ① Motor	Single-Phase 220V	3-Phase 380V
	Output Power ② Control	Single-Phase AC 220V, DC 24V	Single-Phase AC 220V, DC 24V
Compressor	Input Power	Single-Phase 220V	Single-Phase 220V
	Power Consumption	5.5Hp / 4.2kW	5.5Hp / 4.2kW
	Capacity	75ℓ	75ℓ
	Pressure	8.5bar	8.5bar
Hydraulic Motors and Valves	Input Power	Single-Phase 220V	3-Phase 380V
	Power Consumption	5.5Hp / 3.7kW	7.5Hp / 5.5kW
	Motor Revolutions	1,650 rpm	1,650 rpm
	Valve Control	Proportional Control Type	Proportional Control Type
Options	Main Power Extension Cord	-	-
	Rebar Support	Customizable	Customizable
	Basic Size	500(W)×500(H)×500(D)	500(W)×500(H)×500(D)

Components	Specification Category	For domestic use	For export
Wireless Remote Control Transmitter	Radio System	FSK	FSK
	Frequency Channel	447.8625~447.9875MHz	447.8625~447.9875MHz
	Frequency Output	10mW	10mW
	Transmission / Reception Distance	Within 100m	Within 100m
	Operating Temperature	-25°C~80°C	-25°C~80°C
	Waterproofing	IP 65	IP 65
	Weight	1.5kg(including the battery and suspenders)	1.5kg(including the battery and suspenders)
	Size	100(L)×250(W)×170(H)	100(L)×250(W)×170(H)
	Operating Duration	8 hours or more	8 hours or more
Wireless Remote Control Receiver	Input Power	10~32VDC	10~32VDC
	Power Consumption	150mA(no load)	150mA(no load)
	Proportional Control Channel	6Ch(PVG) or 13Ch(3A)(PWM)	6Ch(PVG) or 13Ch(3A)(PWM)
	Proportional Control Type	Voltage control or current control	Voltage control or current control
	Proportional Control Adjustment	256bit	256bit
	Waterproofing	IP 65	IP 65
	On/Off Output	16Ch(3A) FAT output	16Ch(3A) FAT output
	Size	276(L)×162(W)×85(H)	276(L)×162(W)×85(H)

· Electrical specifications can be customized



# Transfer Car.

## About Boommaster Transfer Car BMC830

The Boommaster transfer car is a device that safely transports the distributor in a place that a forklift cannot access.

With the built-in wired remote control, it is easy for anyone to control it.



# Product Specifications.

Boommaster Transfer Car Specifications.

Components	Specification Category	Specifications
Size	Width	1,480mm
	Length	2,035mm
	Height	770mm (950mm when the cylinder is raised)
	Weight	830kg
Electric Panel	Size	200(W)×300(H)×150(D)
	Input Power	Single-Phase 220V
	Output Power	Single-Phase 220V
Hydraulic Motor	Input Power	Single-Phase 220V
	Power Consumption	1Hp / 0.75kW
	Motor Revolutions	1,750rpm
Electric Driving Motor	Input Power	Single-Phase 220V
	Power Consumption	1Hp / 0.75kW
	Motor Revolutions	1,750rpm
	Valve Control	Steering : On/Off type   Lifting Cylinder : Manual
Wired Remote Control Transmitter	Weight	250g
	Cable	5m
	Size	145(L)× 60(W)×54(H)



